



The Central Missouri Orchid Society

NEWSLETTER - Sept. 9, 2007

NEXT MEETING Sunday, September 9, 4PM, at Rock Quarry House

The next meeting will be on Sunday, Sept. 9, 4 PM at Rock Quarry House. The program will be "Cattleya Orchids." If possible, each member should please bring two cattleya plants and be prepared to talk about them. We will discuss where the plants are grown and under what conditions, and how and when the plants are watered and fertilized. Any cattleya is fine: standard or small, blooming or not.

Please bring blooming plants for show and tell and, of course, snacks are always nice! It will be fun to hear about everyone's summer and what plants grew better in the heat and which ones had to be moved to cooler conditions. Hope to see you there!

DIRECTIONS: Rock Quarry House is at Rock Quarry Park, 2002 Grindstone. To get there from Stadium, either

- 1) take Old 63 south to the round-about, turn right onto Bearfield, turn right at the first stoplight onto Grindstone. Take the second left turn lane before you get to Rock Quarry Rd. **or**
- 2) from Stadium, take Rock Quarry Rd. south, turn LEFT onto Grindstone. Take the first right turn lane before you get to Bearfield. **or**
- 3) from Stadium take Providence south to Nifong. Turn LEFT on Nifong, take the first right turn lane past Rock Quarry Rd and before you get to Bearfield.

Rock Quarry Park is on the south side of Grindstone at the top of a hill between the Rock Quarry and Bearfield stop lights. There is a not-very-obvious skinny driveway and a brown sign on the hill that says Rock Quarry Park, 2002 Grindstone Ave. Follow the driveway to Rock Quarry House.

Pots to Planks

at Superior Garden Center



October 12, 13, 14, 2007

Ever wonder what to do with all of those empty nursery pots and 4-packs? Superior Garden Center, in partnership with the City of Columbia Solid Waste Management Division and Ryan Enterprises, is sponsoring a community-wide recycling event. Gather up your nursery containers, and those of your friends and family, and bring them to the garden center during these 3 days. Mid-Missouri gardening clubs will be on hand to assist with collections and offer gardening advice.

Please remove all metal and excess soil prior to delivering your containers.

Friday, October 12 & Saturday, October 13 9:00 a.m. – 5:00 p.m.
Sunday, October 14 10:00 a.m. – 4:00 p.m.



3100 Old Highway 63 South Columbia, MO 65201
(573) 442-9499

www.superiorgardencenters.com



LARGE FLOWER ORCHID TRIVIA

from Dot Henley of the Fort
Lauderdale Society

Sobralia xantholeu-
cea flowers are 10"
in diameter and Paph
Sanderianum has 40"
twisted petals.
Botanica's Orchids. 2002.
San Diego, Ca. Lauren Glen.
Pub. Page 12

Phrag. Grande pet-
als hang down as far
as 18 inches, making
it the longest orchid
flower. If you hold the
petals horizontally,
you have a 36" wide
orchid.
Rittershausen, B and W. 2003.
Growing Orchids, Hermes
House, London England.

MEETING SCHEDULE

September 9, 2007, 4pm

October 14, 2007, 4pm

November 11, 2007, 3pm

December 9, 2007, 3pm

January 13, 2008, 3pm

February 10, 2008, 3pm

March 9, 2008, 4pm

April 13, 2008, 4pm

May 18, 2008*, 4pm

**3rd Sunday instead of 2nd
because of Mother's Day*

Pots to Planks

at Superior Garden Center



October 12, 13, 14, 2007

In June, Superior Garden Center hosted the first "Recycling Event" in conjunction with the City of Columbia and Ryan Enterprises. The 3-day event was a huge success as we collected over 4,800 lbs. of plastic nursery containers! The plastic was later recycled into landscape timbers.

With such an overwhelming response from the public, and a desire by our staff to continue this event, we are once again hosting a recycling weekend now called "Pots to Planks". The event hosted in June went smoothly and was an incredible learning experience. In order to process and handle large quantities of nursery containers however, we need some more great partners to participate!

Thus, we are looking for central Missouri organizations who are involved with and concerned about our environment, to join our partnership in helping to collect and process used nursery containers. What we would like help with on this endeavor, is for your group to sponsor a time during the Pots to Planks collection time where club members can greet participants, help unload vehicles, sort through donated containers, and visit with the public.

Your involvement in Pots to Planks is an excellent opportunity to interact with the gardening public and promote your organization. We suggest using this volunteer time not only as a way to help reduce the amount of plastic in our landfills, but a way to share your gardening knowledge and what your group has to offer our society.

Details for your organizations support is as follows:

- 3 - 5 volunteers per shift
- Organization's name will be posted at the event
- Cold drink and ice will be provided
- Table space, provided by Superior, for information regarding your organization and educational materials

Pots to Planks takes place October 12 - 14, 2007

Available shifts are as follows:

- Friday, October 12 from 9:00 a.m. – 1:00 p.m.
- Friday, October 12 from 1:00 p.m. – 5:00 p.m.
- Saturday, October 13 from 9:00 a.m. – 1:00 p.m.
- Saturday, October 13 from 1:00 p.m. – 5:00 p.m.
- Sunday ,October 14 from 12:00 p.m. – 4:00 p.m.

We are very excited about the upcoming event and hope that your organization will be equally excited to partner with us on this endeavor. For more information or to sign up as a partner for the project, please contact Amy Craighead of Superior Garden Center at (573)442-9499 or superior@tranquility.net. We look forward to hearing from you!

Sincerely,

Amy Craighead
General Manager
Superior Garden Center

ORCHID FOSSIL QUELLS EVOLUTIONARY QUARREL

by Marlowe Hood Wed Aug 29, 1:48 PM ET

A bee trapped by a glob of sap inside a come-hither orchid up to 20 million years ago has rewritten the evolutionary tale of a flower with the most fanatical following of any plant in the world.

In a study published Wednesday, biologists say the most recent common ancestor to all modern-day orchids lived in the twilight of the dinosaurs, in the Late Cretaceous period some 80 million years ago.

The finding settles a century-old hothouse debate. Previous estimates, based on mainly circumstantial evidence, ranged from 26 to 110 million years ago.

What killed the dinosaurs -- wiped out, apparently when an asteroid whacked into Earth -- may also have helped orchids.

The flowers spread dramatically across the globe shortly after this mass extinction and just before the rise of mammals, say the team, led by Harvard researcher Santiago Ramirez.

The Orchidaceae family is the largest in the plant kingdom, numbering at least 25,000 species.

Hundreds more are brought to light every year to feed a lucrative market, and orchid hunters are known for venturing into remote, often dangerous jungle in search of ever more exotic gems.

Writing in the British journal *Nature*, Ramirez reports on grains of orchid pollen found on the back of a bee in the Dominican Republic.

The insect was trapped for eternity in amber, dropped from a tree, after it was lured to the flower by the prospect of nectar some 15-20 million years ago.

"It is the first identifiable fossil orchid ever found," Ramirez told AFP.

"And it is the first case in which an insect-orchid interaction has been observed in the fossil record."

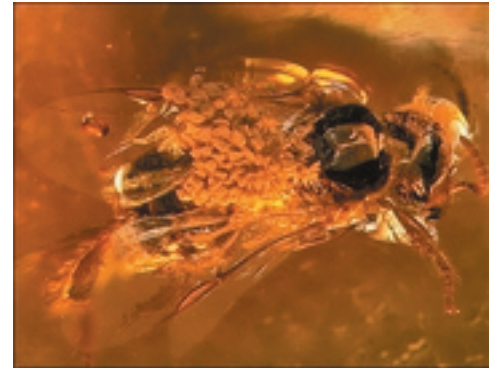
The new orchid species, identified from the morphology of the pollen, has been dubbed *Meliorchis caribea*.

Dating the fossil enabled Ramirez to calibrate a "molecular clock" which uses the DNA mutations to estimate the time of divergence between living organisms.

By building a "family tree" of orchids, the scientists could move back in time to see when the species first appeared and where and how it spread.

The luckless bee has become a timeless testament to the orchid's seductive power, for there was probably nothing for the insect to eat.

Biologists have long been fascinated by the evolutionary adaptations of orchids for attracting, deceiving, and manipulating insects to achieve cross-pollination. For romantics, too, nothing beats the orchid -- as a love offering.



AFP/HO Photo: This handout photo from Harvard University shows an amber-preserved stingless bee carrying pollinia of *Meliorchis*...

MID-AMERICA ORCHID CONGRESS

Plan to attend in Kansas City: the fall MAOC meeting is scheduled for November 16-18 -- information available on www.kcorchidshow.org.

Rooms are available at the Hilton Garden Inn, Independence, MO 64057 at the MAOgroup rate of \$84 + tax, king or double (800-445-8667 or 816-350-3000 for reservations); this rate available until October 26, 2007.

Speakers include Dr Richard Warren, Equatorial Plant Co., Durham, UK "Lost orchids of the Organ Mountains, Brazil" and James Rose, Cal-Orchid, Inc., Santa Barbara, CA "Culture and hybridization of reedstem epidendrums".

Vendors so far include: Bird's Botanicals, Kansas City, MO; Natt's Orchids, Naperville, IL; Gypsy Glen Orchids, Beaver, PA; Cal-Orchid, Inc., Santa Barbara, CA; Ecuagenera, Cuenca, Ecuador; Oak Hill Gardens, Dundee, IL; Hoosier Orchids, Indianapolis, In; New Vision Orchids, Yorktown, IN; Roberts Mfg. Jeweler, Inc., Natchitoches, LA.

Please register for the breakfast hosted by the Affiliated Societies Committee to be held on Sunday morning, November 18, 2007. The topic for discussion will be "Keeping Orchid Society Membership Relevant in Today's Society."